



**Paper  
impregnate**



# Impregnation not only for the wood

Our company boasts extensive experience in the production of wax emulsions for impregnation. Therefore, in addition to products used in the wood industry, our portfolio also includes waxes and emulsions used for paper impregnation.

Paper subjected to this type of refinement does not lose its properties in a humid environment, and there are no spots or colour breaks on its surface, which reduce the visual appeal of the product.



## FCM/GMP

some products intended for direct contact with food



## HYDROPHOBIC

wax-coated paper becomes an impermeable barrier to water



## CONTROL SYSTEM

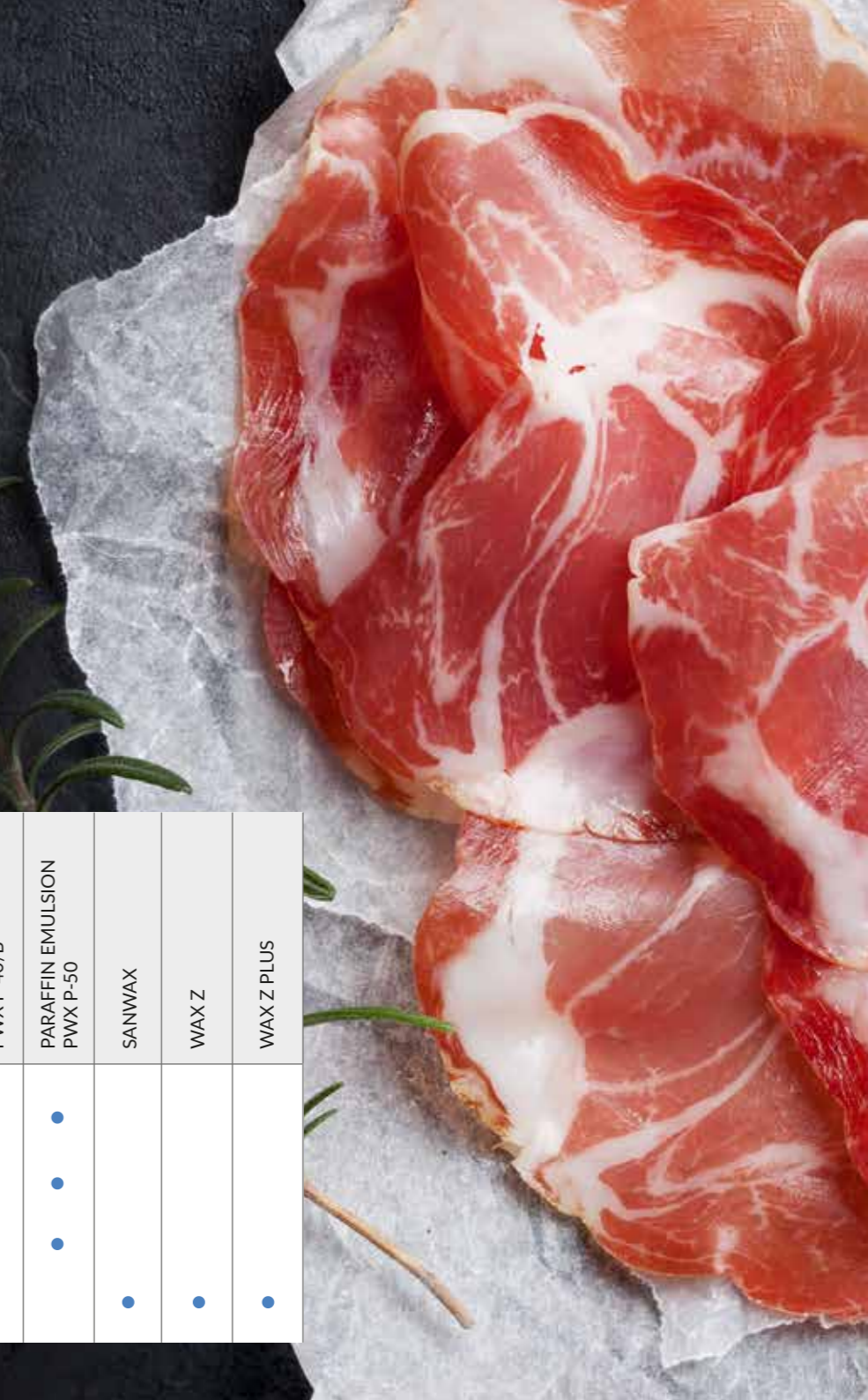
production activities in accordance with the Code of Good Manufacturing Practice applicable in the company

PRODUCT	MAIN APPLICATION	TECHNICAL SPECIFICATIONS
PARAFFIN EMULSION PWX F-40/A	For coating paper and cardboard, especially for packages With complex irregular shape	Current Safety Data Sheets and Information Sheets as well as Technical Conditions of individual products are available on our website <a href="http://polwax.pl">polwax.pl</a>
PARAFFIN EMULSION PWX F-40/B		
PARAFFIN EMULSION PWX P-50		
SANWAX	Used in the paper industry for paper coating. Product intended for food contact	
WAX Z		
WAX Z PLUS		

# Food packaging

Extending the shelf life and maintaining all the properties of food products are the basic functions of packaging. Effective protection requires separating food products from external factors. Covering the paper with a layer of wax gives its surface a gloss and provides it water-repellent properties.

Impregnated paper does not absorb water and does not stick to the products, which are packed in it. In addition, it protects the food against moisture or, depending on the requirement, against loss of moisture.



Packaging, storage	PARAFFIN EMULSION PWX F-40/A	PARAFFIN EMULSION PWX F-40/B	PARAFFIN EMULSION PWX P-50	SANWAX	WAX Z	WAX Z PLUS
BULK (LIQUID) IN HEATED STORAGE TANKS	●	●	●			
20 L METAL CANS AND 200 L DRUM METAL CONTAINERS	●	●	●			
PALLET-CONTAINERS 1000 L	●	●	●			
PASTILLES IN 20 KG POLYETHYLENE BAGS				●	●	●

### **Product suitability guarantee**

The guarantee of suitability of individual products applies only to physical and chemical parameters and is counted from the date of sale. Detailed parameters are specified in the technical conditions available at [polwax.pl](http://polwax.pl)

### **Storage method**

The products should be stored in closed packages, protected against direct sunlight, moisture and mechanical impurities, away from heat sources. In addition, the technical conditions include information on the appropriate storage temperature, as well as the possible shelf life of individual products stored in accordance with the guidelines.

### **Conditions of delivery**

The products are manufactured in the Production Plant in Jasło (PL38200) and Czechowice-Dziedzice (PL43502). Possible collection by own transport on the basis of the FCA production plant. It is possible to organize transport by Polwax S.A. (based on CPT), after presenting a price offer including delivery costs to the customer's premises.

### **Orders and delivery schedules**

Orders for full truck loads should be sent at least 7 days before the planned shipment of the product. In the case of larger quantities for regular collections, it is advisable to send a monthly collection schedule by the 20th day of the month preceding the month of delivery.